

5 STOREY
BRICK UNITS
(PARKING BELOW)
No. 72 I

2 STOREY BRICK
BUILDING/WAREHOUSE
No. 49

CONCRETE
CARPARK

STREET

DRUMMOND

LANE

DRUMMOND

maintenance specification

Maintenance shall apply to all soft landscape materials installed as per landscape plan ISO298DA1-3 and as accepted by the City of Canterbury Bankstown including street tree planting. Maintenance of softworks shall be for a minimum of 52 weeks after practical completion.

Minimum recurrent maintenance shall be as per schedule and consist but not be limited to the following works:

- Water all plants twice per week or as necessary to ensure maximum plant growth. For the first 8 weeks from establishment maintain moisture to a depth of 100mm.
- Apply appropriate weed control sprays where necessary.
- Regularly cultivate to ensure water penetration to plants and to keep the area in a neat and tidy condition. Re-mulch as necessary to all mass planted areas.
- Spray to control pests and diseases.
- Apply organic slow release fertiliser to garden areas at 3 monthly intervals through spring and summer. Organic liquid fertiliser to be applied throughout spring & summer as required.
- Replace plants which fail with plants of a similar size and quality as originally specified (at contractors cost) prior to next inspection.
- Report any incidence of plants stolen or destroyed by vandalism. Replace as requested.
- Adjust stakes and ties to plants as necessary. Ensure strangulation of plants does not occur.
- Prune and shape plants as required. Shrub plantings to site boundaries are to be pruned to allow for access where required.
- Defects of faults arising out of defective workmanship are to be made good.
- Irrigation system and components are to be inspected at regular intervals to ensure correct operation. Minor repairs are to be undertaken to components. System failures are to be reported to body corporate representative for action.
- A final inspection shall be made by the landscape architect at the conclusion of the 52 week maintenance period. Any items requiring rectification shall be repaired to satisfaction of the Landscape Architect.

maintenance schedule

	December-February	March-May	June-August	September-November
WATERING				
Turf	n/a	n/a	n/a	n/a
Garden Areas	Twice weekly	Weekly	As required	Weekly
WEED CONTROL				
Turf	n/a	n/a	n/a	n/a
Garden Areas	Fortnightly	As required	As required	Fortnightly
PEST CONTROL				
Turf	n/a	n/a	n/a	n/a
Garden Areas	Monthly	As required	As required	Quarterly
FERTILISING				
Turf	n/a	n/a	n/a	n/a
Garden Areas	Quarterly			Quarterly
PRUNING				
Garden Areas	Weekly	As required	As required	Fortnightly
TOP DRESSING (Annually)				
Turf	n/a	n/a	n/a	n/a
MOWING				
Turf	n/a	n/a	n/a	n/a
MULCHING (annually)	Weekly	As required	As required	Fortnightly
Garden Areas				October

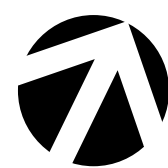
plant schedule

ID	Qty	Botanical Name	Common Name	Size	Mature Height	Mature Spread	Staking
Trees							
Aa	4	Acmena smithii 'DOW30' Sublime	Lily Pily	75L	4 - 5m	2 - 3.0m	YES
Eg	2	Corymbia gummiifera	Red Bloodwood	45L	15 - 20m	6 - 10m	YES
Shrubs & Accents							
as	5	Acmena smithii 'Hot Flush'	Lillypilly	5L	1.5 - 3m	1.0 - 1.5m	N/A
ba	2	Bambusa chungii	Tropical Blue Bamboo	25L	5 - 10m	2.0 - 3.5m	YES
bp	2	Bambusa nana	Nana	25L	3 - 5m	2.0 - 3.5m	YES
bx	1	Bambusa textilis var. gracilis	Slender Weavers Bamboo	25L	3 - 5m	2.0 - 3.5m	YES
be	9	Buxus microphylla	Japanese Box	25L	1.5 - 3m	1.2 - 2.0m	NO
gw	2	Gigantochloa wrayi	Malaysian Bamboo	25L	5 - 10m	1.2 - 2.0m	YES
ps	7	Pittosporum tobira 'Miss Muffett'	Pittosporum 'Miss Muffett'	15L	0.5m	0.5m	NO
ri	15	Rhaphiolepis indica 'RAPH01' Cosmic White	Cosmic White	15L	1.5 - 2.0m	1.5m	YES
rc	11	Rhaphiolepis indica 'RAPH02' Cosmic Pink	Cosmic Pink	5L	0.50m	0.80m	NO
vt	12	Viburnum odoratissimum 'VOCI'	Dense Fence	15L	2.5m	2m	YES
za	12	Zamia furfuracea	Cardboard Palm	15L	0.9 - 1.5m	0.9 - 1.2m	N/A
Ground Covers							
cq	115	Carpatobrotus glaucescens 'CAR10' Aussie Rambler	Aussie Rambler	100mm	0.0 - 0.3m	1.2 - 2.0m	N/A
du	165	Dianella caerulea	Blue Flax Lily	100mm	0.50 - 1.0m	0.5 - 1.5m	N/A
he	33	Hardenbergia violacea 'HB1' Meema	Meema	150mm	0.50m	2.0m	N/A
px	93	Philodendron 'Xanadu'	Philodendron	100mm	0.75 - 0.9m	0.9 - 1.2m	N/A
Grasses							
Climbers							
Aquatic Plants							
Perennials							
Ferns							
Total 490							

key

+	EXISTING LEVELS
RL 66.65	PROPOSED LEVELS
○ 0.4M/10	EXISTING TREE TO BE RETAINED
+ 0.4M/10	EXISTING TREE TO BE REMOVED
- - -	EXISTING STRUCTURES TO BE REMOVED
- - -	EXTENT OF BASEMENT UNDER
[Pattern]	TILE TO PRIVATE OPEN SPACE (by others)
[Pattern]	TILE TO COMMON OPEN SPACE (by others)
[Pattern]	TILE TO COMMON OPEN SPACE (by others)
[Pattern]	TILE TO RESIDENTIAL ENTRY (by others)
[Pattern]	PLANTER TO MATCH WITH BUILDING (min. soil depth 600mm) (TO ENG. DETAILS)
[Pattern]	PLANTER TO MATCH WITH BUILDING (min. soil depth 300mm) (TO ENG. DETAILS)
[Pattern]	SHADE STRUCTURE OVER (TO ARCH & ENG. DETAILS)
[Pattern]	'GREEN ROOF' MEADOW MASS PLANTING (Modular prefabricated green roof system)
[Pattern]	ACCENT GROUND COVER PLANTING (Carpatobrotus glaucescens 'CAR10' Aussie Rambler) @ 0.4m spacing
[Pattern]	ACCENT GROUND COVER PLANTING (Dianella caerulea) @ 0.4m spacing
[Pattern]	ACCENT MASS PLANTING (Hardenbergia violacea 'HB1' Meema) @ 0.4m
[Pattern]	MASS PLANTING (Philodendron 'Xanadu') @ 0.4m spacing
[Pattern]	'VEGE' GARDEN MASS PLANTING (Prefabricated planters)

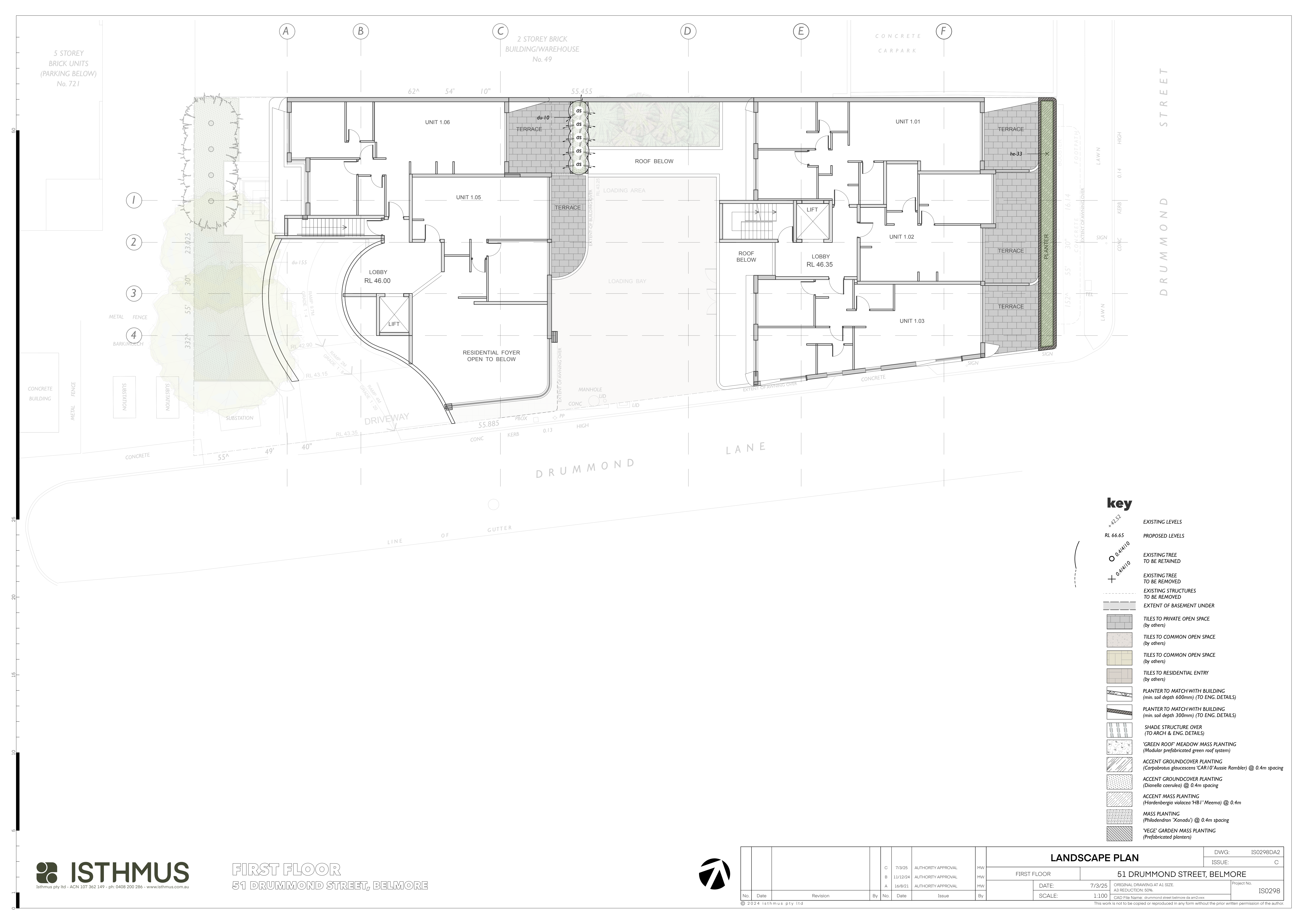


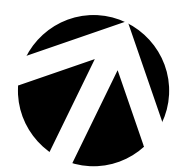


									LANDSCAPE PLAN			DWG: IS0298DA2	
												ISSUE: C	

key

- EXISTING LEVELS
- PROPOSED LEVELS
- EXISTING TREE TO BE RETAINED
- EXISTING TREE TO BE REMOVED
- EXISTING STRUCTURES TO BE REMOVED
- EXTENT OF BASEMENT UNDER
- TILE TO PRIVATE OPEN SPACE (by others)
- TILE TO COMMON OPEN SPACE (by others)
- TILE TO COMMON OPEN SPACE (by others)
- TILE TO RESIDENTIAL ENTRY (by others)
- PLANTER TO MATCH WITH BUILDING (min. soil depth 600mm) (TO ENG. DETAILS)
- PLANTER TO MATCH WITH BUILDING (min. soil depth 300mm) (TO ENG. DETAILS)
- SHADE STRUCTURE OVER (TO ARCH & ENG. DETAILS)
- 'GREEN ROOF' MEADOW MASS PLANTING (Modular prefabricated green roof system)
- ACCENT GROUND COVER PLANTING (Carpobrotus glaucescens 'CAR10' Aussie Rambler) @ 0.4m spacing
- ACCENT GROUND COVER PLANTING (Dianella caerulea) @ 0.4m spacing
- ACCENT MASS PLANTING (Hardenbergia violacea 'HB1' Meema) @ 0.4m
- MASS PLANTING (Philodendron 'Xanadu') @ 0.4m spacing
- 'VEGE' GARDEN MASS PLANTING (Prefabricated planters)

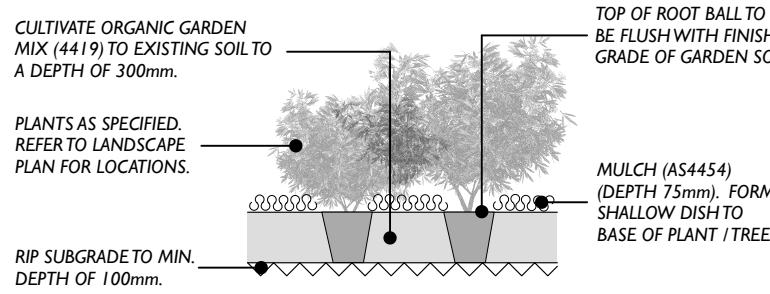




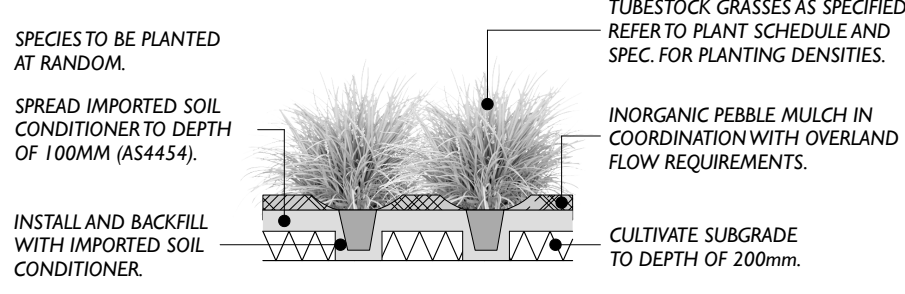
						LANDSCAPE PLAN			DWG:	ISO298DA3
						ROOFTOP			ISSUE:	C
						51 DRUMMOND STREET, BELMORE				
						DATE: 7/3/25			ORIGINAL DRAWING AT A1 SIZE	
						SCALE: 1:100			A3 REDUCTION: 50%	
									Project No.	
									IS0298	
									CAD File Name: drummond street belmore da am2wvw	
									This work is not to be copied or reproduced in any form without the prior written permission of the author.	

key

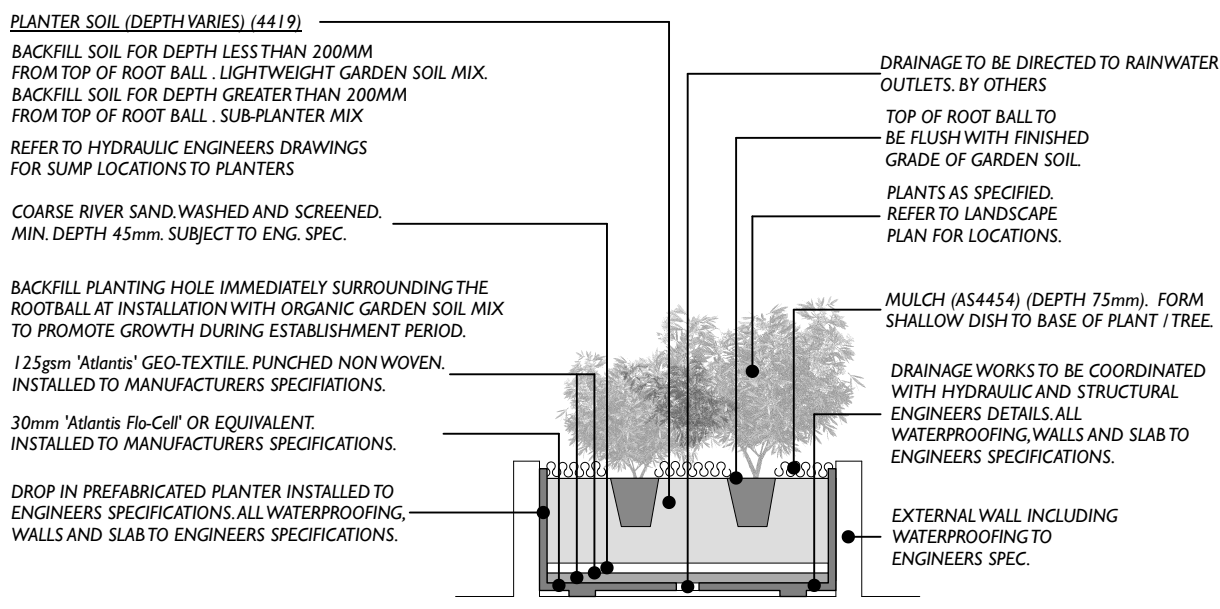
- EXISTING LEVELS
- PROPOSED LEVELS
- EXISTING TREE TO BE RETAINED
- EXISTING TREE TO BE REMOVED
- EXISTING STRUCTURES TO BE REMOVED
- EXTENT OF BASEMENT UNDER
- TILE TO PRIVATE OPEN SPACE (by others)
- TILES TO COMMON OPEN SPACE (by others)
- TILES TO COMMON OPEN SPACE (by others)
- TILES TO RESIDENTIAL ENTRY (by others)
- PLANTER TO MATCH WITH BUILDING (min. soil depth 600mm) (TO ENG. DETAILS)
- PLANTER TO MATCH WITH BUILDING (min. soil depth 300mm) (TO ENG. DETAILS)
- SHADE STRUCTURE OVER (TO ARCH & ENG. DETAILS)
- 'GREEN ROOF' MEADOW MASS PLANTING (Modular prefabricated green roof system)
- ACCENT GROUND COVER PLANTING (Carpobrotus glaucescens 'CARI O' Aussie Rambler) @ 0.4m spacing
- ACCENT GROUND COVER PLANTING (Dianella caerulea) @ 0.4m spacing
- ACCENT MASS PLANTING (Hardenbergia violacea 'HB1' Meema) @ 0.4m
- MASS PLANTING (Philodendron 'Xanadu') @ 0.4m spacing
- 'VEGE' GARDEN MASS PLANTING (Prefabricated planters)



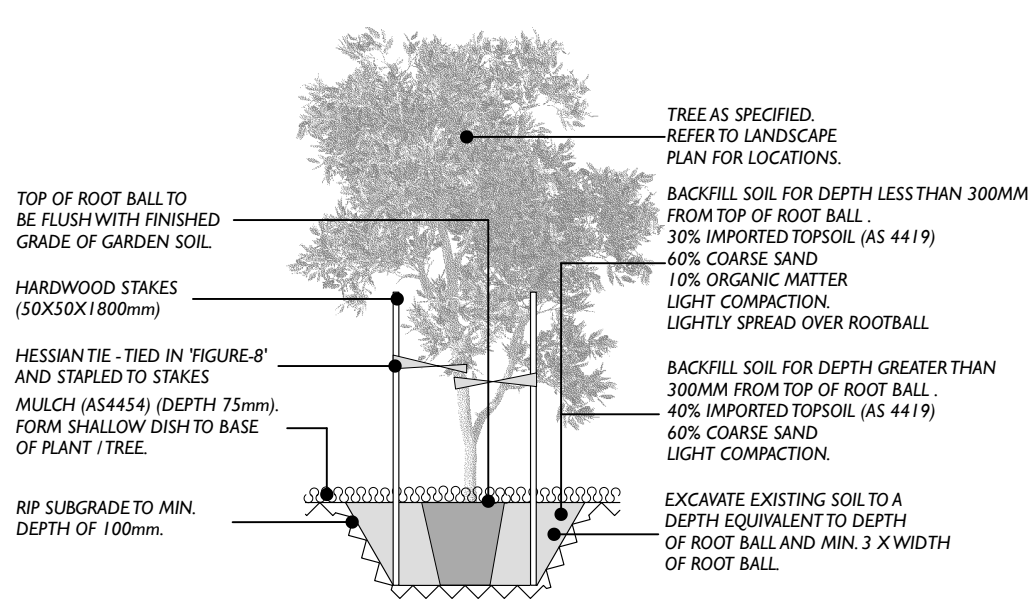
2. DEEP SOIL GARDEN BED PLANTING NTS NOT FOR CONSTRUCTION



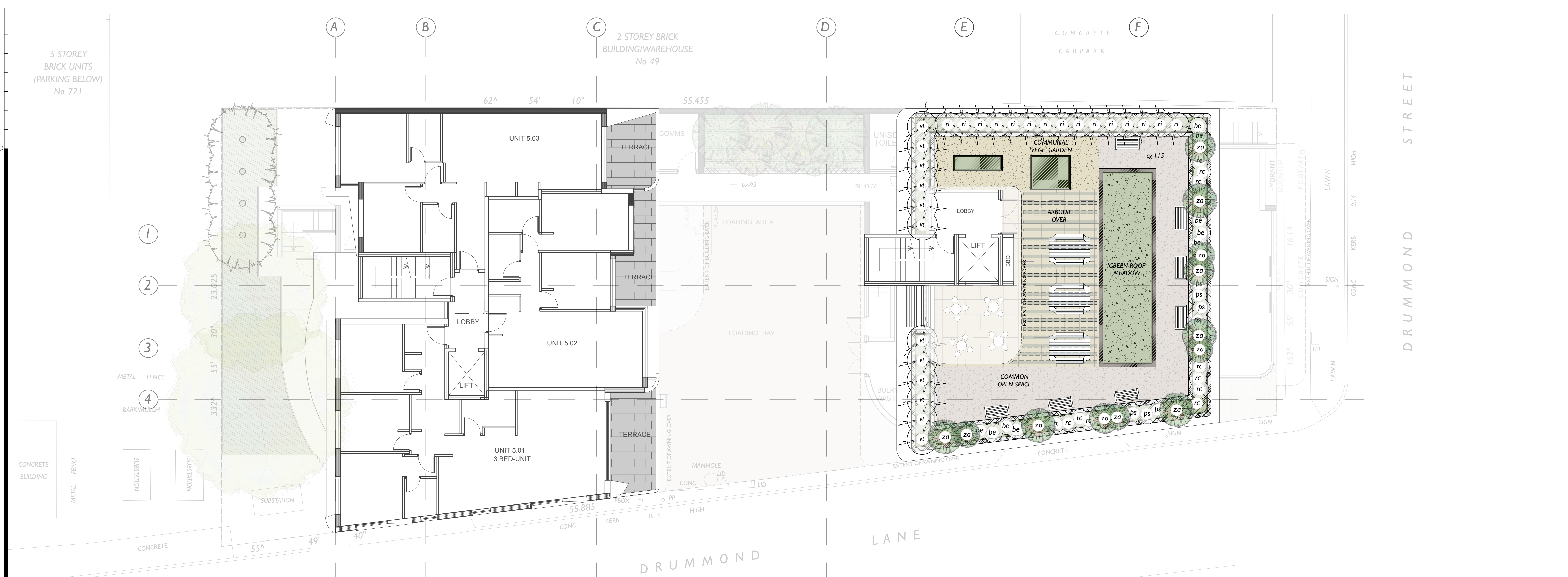
3. ACCENT GRASS MASS PLANTING NTS NOT FOR CONSTRUCTION



4. ON STRUCTURE ACCENT & SHRUB PLANTING NTS NOT FOR CONSTRUCTION



5. DEEP SOIL TREE PLANTING NTS NOT FOR CONSTRUCTION



50
25
20
15
10
5
0